

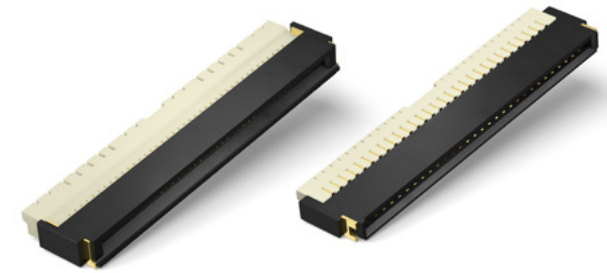
IN Your Future



FFC / FPC Connector

Y5B connects boards and FFC/FPC

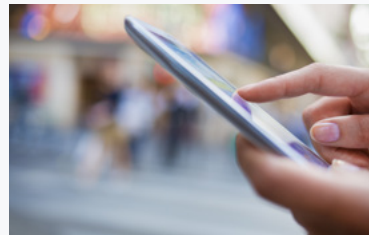
Y5B series are low profile, space saving and back-lock types with terminal pitch of 0.5mm, height of 1.0mm and width of 3.2mm, improving lever workability and secure connection. These connectors are designed for board to FPC and board to FFC connections of e.g. mobile or IOT devices. To fit perfectly in small housings, the size and thickness of the molded part has been further reduced.



Supports high speed transmission standard V-by-One® HS. of THine Electronics, Inc.

Key Features

- Time and effort reduction by delivering the connectors with opened levers
- Mechanical design freedom achieved by top and bottom double contacts
- Wide selection, starting from a small number of only 4 up to 34 pins
- Wiring patterns can be placed underneath the connector
- Effective contact length 1.0mm
- Suitable FPC and FFC 0.30±0.03mm
- 0.5A / pin contact
- Rated voltage 50V AC/DC



Portable Devices

- Smart payment terminal (POS)
- Handheld devices
- Medical dosing



Industrial Devices

- Security & FA cameras
- LCD backlights / Touch panels
- Water flow meters ECU



Smart Home

- Smart access control
- Smart meter / AI speaker
- Operation Panels - HMI



For further Information, please contact connector@eu.panasonic.com

Panasonic
INDUSTRY

Your Committed Enabler